

Domestic & International Packaging

Sheets and large items

Pallets Standard sizes (mm)

- 3048 x 915
- 3050 x 1220
- 3000 x 1500
- 2500 x 1250
- 2438 x 915
- 2000 x 1000
- 1100 x 1100
- 101 x 25
- 76 x 50



Plastic only for domestic delivery

Hard board and plastic top cover for
International delivery

Intermediate sized and non flat items

Crates/ Boxes Standard sizes (mm)

- 700 x 700 x 500
- 730 x 485 x 335
- 480 x 480 x 285
- 480 x 335 x 235
- 330 x 235 x 325

Bubble wrap packaging used for bottom and
top of box for impact protection and reduced
vibration.

Paper spacing on request.

- Steel banding to secure parts
- Edge protection from banding
- Paper part spacing on request
- Wood packs are used for strips where
pallets are too big.



UK pallet



Int pallet with edge protection



Small pallet

International parts edge protection on all edges
hard board layer before plastic, no material
visible

- Wooden crates steel banded
- Hard board flat packs used for items too
small for pallets whilst not enough for
boxing. All seams are sealed via glass
weave tape.



Large crate



Wood pack with sealed edge

Special packing requirements on customer request
All woods used are steam treated to reduce contamination
On customer agreement minimum material is used to reduce carbon footprint.

Small items

- Plastic containers bubble wrap packaging used for bottom and top of box for impact protection and reduced vibration.
 Paper spacing on request.
- Padded bags, parts wrapped in plastic pouch before padded container bag.
- Glass weave tape to seal



Plastic container



Plastic pouch



Padded bag

Single round bar & Tubing

- Wooden pack base
- Steel banding for large diameters
- Glass weave tape for small dia's
- Cellophane wrapping edges

International bars all box contained



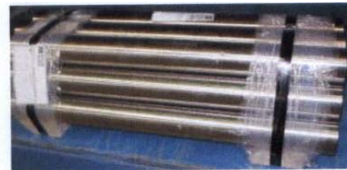
Single large bar

Multi bars

- Wooden base
- Steel banding for large diameters
- Glass weave tape for small dia's
- Cellophane wrapping edges

- Compressed card board pack

International bars all box contained



Multi-bar pack



Compressed card board

Special packing requirements on customer request
All woods used are steam treated to reduce contamination
On customer agreement minimum material is used to reduce carbon footprint.

Operating Procedure: Packaging
Revision date 6/24/2009



**Special packing requirements on customer request
All woods used are steam treated to reduce contamination
On customer agreement minimum material is used to reduce carbon footprint.**